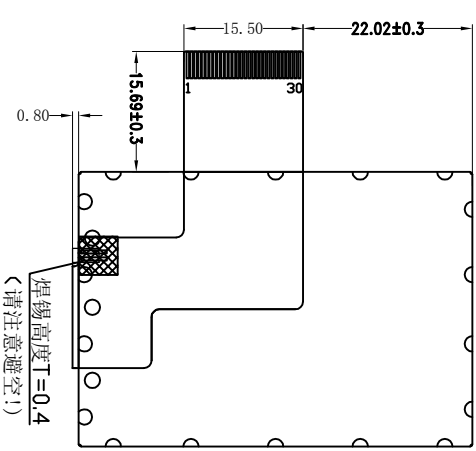
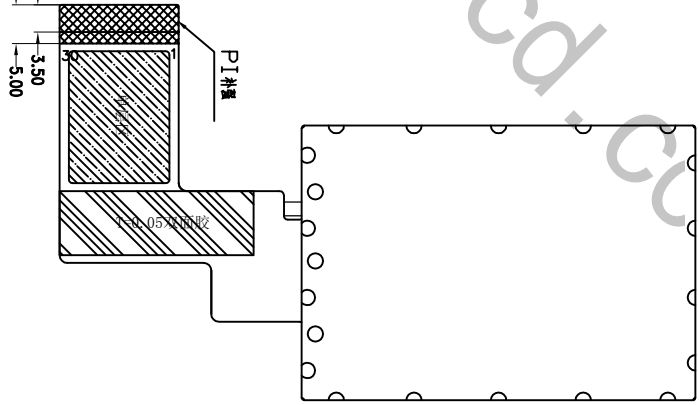
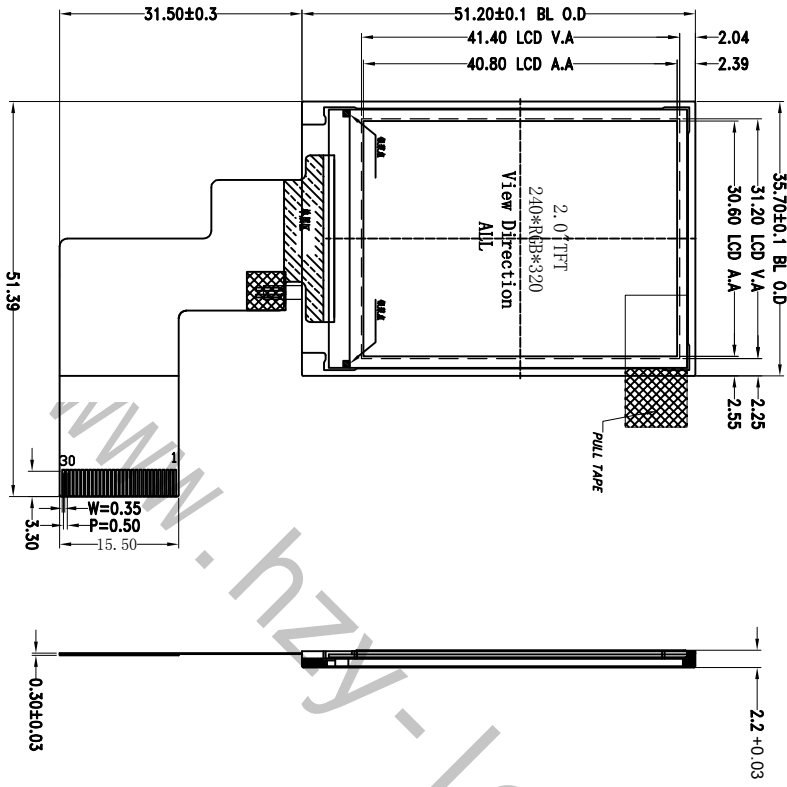
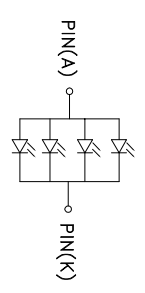


ROSH

Revision	Description	Date	Signed
01	First	2021.07.15	YP



FPC 弯折示意图
*弯折出货



VF=3.2V, IF=80mA
LED CIRCUIT DIAGRAM

PIN	DESCRIPTION
1	VCC3_3V
2	VCC3_3V
3	LEDA
4	RESET
5	GND
6	RD
7	WR
8	RS
9	CS
10	LEDK
11	GND
12	GND
13	GND
14	DB0 (NC)
15	DB1 (NC)
16	DB2 (NC)
17	DB3 (NC)
18	DB4 (NC)
19	DB5 (NC)
20	DB6 (NC)
21	DB7 (NC)
22	DB8
23	DB9
24	DB10
25	DB11
26	DB12
27	DB13
28	DB14
29	DB15
30	TE

MCU: 8BIT

- NOTES:
1. DISPLAY TYPE: 2.0" TFT, TRANSMISSIVE
 2. DRIVER IC: ST7789V3
 3. VIEWING DIRECTION: ALL
 4. BACKLIGHT: 4 pcs White LED
 5. INPUT CURRENT: VCC 2.8V (type)
 6. OPERATING TEMP: -20°C ~ +70°C
 7. STORAGE TEMP: -30°C ~ +80°C
 8. UNDEFINED DIMENSION TOLERANCE: ±0.2mm
 9. ROHS COMPLIABLY

深圳市华之洋光电科技有限公司
Shenzhen HZY Photoelectric Technology Co., Ltd

Customer Ref.	Model No.	Drawing Title	HZ020QPBS01-A0	
Part No.	Approve	Material	Unmarked Tolerance	Unit
Drawing No.	Checked	LCM	±0.2	mm
	Draw	YP	Date	2021.06.18 Rev 00